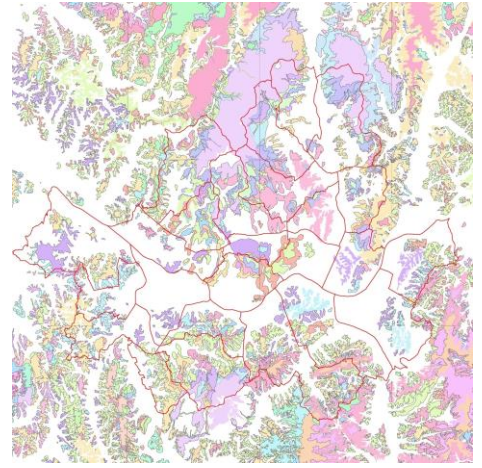


Korean Landscape Heritage

Wybe Kuitert
and
Lab on Landscape in Seoul,
Seoul National University



on *issues* you may read: "[On garden research, aesthetics, and Korean gardens](#)"
Kyujanggak Symposium on Korean Studies, 2019, Seoul National University

You may want to learn how a palace, a retreat, a Buddhist temple, or a Confucian school was designed specific to the site.
See below:

You may want to learn how Seoul developed on its *landscape system* in the past, and how this heritage inspires urban design today.
Scroll down:

Palaces in Seoul

Gyeongbok Royal Palace (publications by Wybe Kuitert)

* (2017) "[From Gyeongbok Royal Palace to the Chosun Exposition: A Transformation in Space](#)" in: Sano, Mayuko (ed.) *International Research Symposium Proceedings: 'Expo and Human History'* International Research Center for Japanese Studies

* (2015) 「景福宮から朝鮮博覧会場への空間変貌」 (in Japanese: Spatial change from Gyeongbok Palace to the Chosen Expo site) 佐野真由子 (編集) 『万国博覧会と人間の歴史ーアジアを中心に』 思文閣、235-266

[The faces of East Palace - palace landscape](#) on palaces Changdeokgung and Changgyeonggung (Students' project at Lab on Landscape in Seoul, Seoul National University, 2018)

Gardens in Korea

[Byeongsan Seowon Confucian School Landscape System Analysis](#)

(Students' project at Lab on Landscape in Seoul, Seoul National University, 2020)

[Seongnagwon Private Retreat Landscape System Analysis](#)

(Students' project at Lab on Landscape in Seoul, Seoul National University, 2020)

[Gagyeon Buddhist Temple Landscape System Analysis](#)

(Students' project at Lab on Landscape in Seoul, Seoul National University, 2020)

Kim Sumi "[Plant Selection for Traditional Korean Garden Design by Landscape Types](#)"

(Lab on Landscape in Seoul, Seoul National University Master thesis, 2012)

You may want to learn how Seoul developed on its *landscape system* in the past, and how this heritage inspires urban design today.
Scroll down to next page:

Landscape System of Seoul

analysis and design

(publications by Wybe Kuitert)

- * (2013) "[Urban landscape systems understood by geo-history map overlay](#)" *Journal of Landscape Architecture (JOLA)* 8 (1) (also as: Issue 15, spring 2013): 54-63
- * (2013) "[The nature of urban seoul: Potential vegetation derived from the soil map](#)" *International Journal of Urban Sciences*. 17, 1: 95-108
- * (2011) "Urban Landscape Systems – Analyzing the Soil of Berlin and of Seoul" (Abstract) *The 8th IALE World Congress of the International Association for Landscape Ecology, Landscape ecology for sustainable environment and culture*, Proceedings, p.269, Beijing, China, August 2011
- * (2011) [作为景观系统的首尔](#) (in Chinese: "Landscape System of Seoul", edited version of Topos (73) 风景园林新青年 (*Youth Landscape Architecture*))
- * (2010) "[Seoul as Landscape System](#)" *Topos – The International Review of Landscape Architecture and Urban Design* 73: 52-55
- * (2010) "[Soul and Soil of Seoul, about landscape as a tool to identity and sustainability](#)" (Conference paper) *Harmony and Prosperity - Traditional Inheritance and Sustainable Development*, International Federation of Landscape Architects, 47th IFLA World Congress Proceedings CD-ROM, Suzhou China, May 2010

Urban Landscape System Studio (Students' projects for Lab on Landscape in Seoul, Seoul National University)
Research, analysis, planning, and design with focus on urban landscape system

- 2019 [Urban Landscape System Nowon-gu](#)
- 2018 [Urban Landscape System Yangcheon-gu](#)
- 2016 [Urban Landscape System Eunpyeong-gu](#)
- 2015 [Urban Landscape System Gangbuk-gu](#)
- 2014 [Urban Landscape System Gangnam-gu](#)
- 2013 [Urban Landscape System Studio](#)
- 2011 [Urban Open Space Planning & Design](#)
- 2010 [Urban Open Space Planning & Design](#)
- 2009 [Design and Planning of Urban Open Space](#)

Environmental Planning and Design (Students' projects for Lab on Landscape in Seoul, Seoul National University) Planning and design cases with actuality

- 2012 [Inner Coastline Incheon](#) (third prize)
- 2011 [Rediscovery of Han River](#) (first prize)
- 2011 [Rediscovery of Han River \(poster\)](#) (first prize)
- 2011 [Banpo Sapphire Necklace](#) (first prize)
- 2010 [Revitalization of MIARI Traditional Fortune-Telling](#)

Other publications by Wybe Kuitert:

- * (1993) *Feng-shui et fuzei, Tradition et poétique dans l'introduction de l'art du jardin Chinois en ancienne Corée et au Japon* (Feng-shui and fuzei, Tradition and Poetics in the introduction of Chinese garden art in ancient Korea and Japan, in French) résumé, janvier, Collège International de Philosophie Paris
- * (1988) "De onbekende tuinkunst van Korea" *Groen* (Leiden) 44, No.9: 28-30.